

HAERE MAI - WELCOME TO THE

WAITOMO DISTRICT

Please use this freedom camping guide as you travel around the Waitomo District.

ENJOY YOUR STAY!

IN 2023 THE FREEDOM CAMPING ACT 2011 WAS AMENDED TO BRING IN SOME NATIONWIDE CHANGES:

- Vehicles with a portable toilet will no longer be certified self-contained.
- The original \$200 infringement fee has been increased to \$400, with further fees for different related offenses.

More information on these changes can be found on MBIE's website.



The CamperMate app has useful maps indicating camping spots and activities throughout New Zealand.

For more information pop into one of the i-SITE Visitor Information Centres in the District, these are located at:

TE KŪITI I-SITE VISITOR CENTRE

- 📍 190 Rora St, Te Kūiti
- 🕒 9am – 3 pm (Mon – Fri)

WAITOMO CAVES I-SITE VISITOR CENTRE

- 📍 21 Waitomo Village rd, Waitomo Caves
- 🕒 9.30 – 3.30 (Mon – Sun)

Most paid campgrounds in the District require payment using KiwiCash. You will need a KiwiCash key before you arrive.



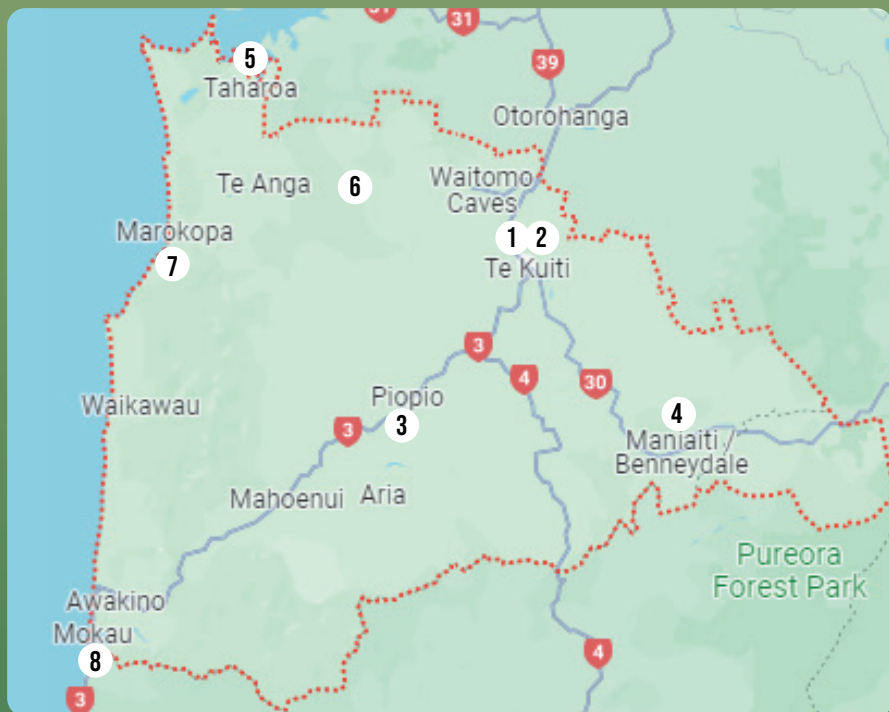
KIWiCASH KEY PURCHASE LOCATIONS:

- Waitomo i-SITE Visitor information centre
- Te Kūiti i-SITE Visitor information centre
- Queen St Dairy – 10 Queen St, Te Kūiti
- BP Service Station (Te Kūiti)
- Cloverleaf Cafe – Piopio
- Gas Piopio – Piopio
- Ōtorohanga i-SITE Visitor information centre

TIPS AND RULES FOR

FREEDOM CAMPING





BLUE, YELLOW AND TEAL LOCATION CONDITIONS:

- Maximum stay of two consecutive nights
- Vehicles must depart before 9am
- No lighting of fires
- Rubbish must put into a bin or taken with you



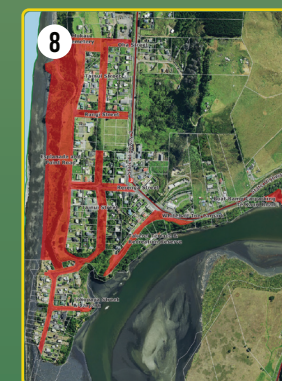
For more information read our Freedom Camping Bylaw to see detailed maps of where you can and cannot freedom camp in the Waitomo District.

RESTRICTED AREAS



MAROKOPA

You cannot freedom camp on any part of Kiritehere Cemetery or the reserve as this is a significant cultural site for mana whenua. It is advised that campers go instead to the nearby Marokopa Campground.



MŌKAU

There is no freedom camping in Mōkau.

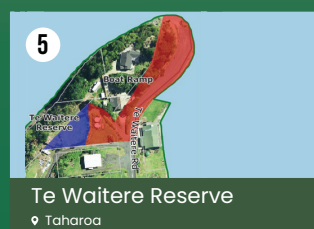
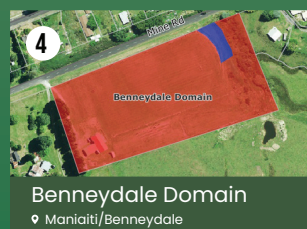
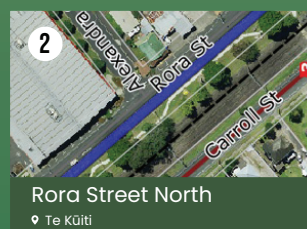
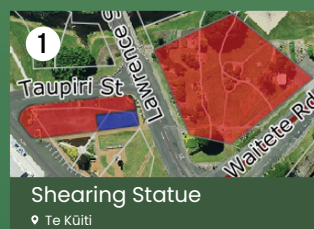
Each council in New Zealand can have their own bylaw to oversee freedom camping in their district or city.

In Waitomo, campers can park overnight in a self-contained vehicle in any public area within the District as long as there are no restrictions in place (in WDC's Freedom Camping Bylaw or parking constraints).

The Bylaw has locations classified as red, blue, yellow, and teal which restrict or permit certain activities in certain locations.

- Red** Prohibited
- Blue** Self-contained vehicles only
- Yellow** Self-contained and non-self-contained vehicles
- Teal** Self-contained, non-self-contained vehicles and tents

PREFERRED LOCATIONS FOR FREEDOM CAMPING:



TRANSFER STATIONS:

- Te Kūiti** – Williams Street
- Maniaiti / Benneydale** – Mine Road
- Kinohaku** – Corner of Te Waitere Rd and Harbour Rd
- Awakino** – Manganui Road
- Piopio** – Corner of Aria Rd and Kahuwera Rd
- Marokopa** – Marokopa Rd (approx 400m east of village)

Please look after the Waitomo District by taking your rubbish with you and using one of our transfer stations.